

---

## Machine optionals

---

### AF4050 (art. 900670)

---

#### ABSOLUTE HEPA FILTER

- ☒ absolute HEPA filter kit class EN 1822-5 H14 99.995% for drying air



#### Machines

GW6010

GW7010

### AF4060 (art. 902814)

---

#### ABSOLUTE HEPA FILTER

- ☒ absolute HEPA filter kit class EN 1822-5 H14 99.995% for drying air



#### Machines

GW4260

GW4290

GW5260

GW5290

### AF7015 (art. 904569)

---

#### ABSOLUTE HEPA FILTER KIT

- ☒ 2 absolute HEPA filters
- ☒ class EN 1822-5 H14 99.995% for drying air



#### Machines

GW6290

GW7015

---

## AS4060 (art. 902897)

---

### AQUA STOP WATER LEAK KIT

- ☒ prevents accidental water leakage
- ☒ detects water leaking from machine and stops it



### Machines

GW0260

GW1260

GW4260

GW5260

---

## AS4190 (art. 903079)

---

### AQUA STOP WATER LEAK KIT

- ☒ prevents accidental water leakage
- ☒ detects water leaking from machine and stops it



### Machines

GW4290

GW5290

---

## DRAINP6010 (art. 903465)

---

### DRAIN PUMP FOR WALL DRAIN

- ☒ additional pump for wall drain
- ☒ to be used when the standard floor drain is not available
- ☒ hose diameter: 21 mm



### Machines

GW6010

GW7010

---

## **DRAINP7015** (art. 904265)

---

### **DRAIN PUMP FOR WALL DRAIN**

- ☒ additional pump for wall drain
- ☒ to be used when the standard floor drain is not available
- ☒ hose diameter: 21 mm



### **Machines**

GW7015

---

## **ESVC10** (art. 904961)

---

### **EXHAUST AIR BREAKER 6010-7010**

- ☒ Chimney vent disconnecter, to be applied to the smoke vent in the upper part of the machines
- ☒ It avoids the transmission of pressure variations to the machine and the consequent alarm signaling
- ☒ The special shape is designed to prevent condensation from returning inside the machine
- ☒ Suitable for 6010/7010 series machines



### **Machines**

GW6010

GW7010

---

## **ESVC15** (art. 904962)

---

### **EXHAUST AIR BREAKER 7015**

- ☒ Chimney vent disconnecter, to be applied to the smoke vent in the upper part of the machines
- ☒ It avoids the transmission of pressure variations to the machine and the consequent alarm signaling
- ☒ The special shape is designed to prevent condensation from returning inside the machine
- ☒ Suitable for 7015 series machines



### **Machines**

GW7015

---

## ESVC6290 (art. 904963)

---

### EXHAUST AIR BREAKER 6290

- ☒ Chimney vent disconnectors, to be applied to the smoke vent in the upper part of the machines
- ☒ They avoid the transmission of pressure variations to the machine and the consequent alarm signaling
- ☒ The special shape is designed to prevent condensation from returning inside the machine
- ☒ Suitable for 6290 series machines



### Machines

GW6290

---

## IC5290 (art. 905833)

---

### QUALITY WASHING CHECK CONDUCTIVITY SENSOR

- ☒ allows to detect impurities in the washing lye
- ☒ activates further rinse phases for achieving the perfect rinse



### Machines

GW5260

GW5290

---

## IC6010 (art. 903527)

---

### QUALITY WASHING CHECK CONDUCTIVITY SENSOR

- ☒ allows to detect impurities in the washing lye
- ☒ activates further rinse phases for achieving the perfect rinse



### Machines

GW6010

GW7010

GW7015

---

## IC6290 (art. 904554)

---

### QUALITY WASHING CHECK CONDUCTIVITY SENSOR

- ☒ allows to detect impurities in the washing lye
- ☒ activates further rinse phases for achieving the perfect rinse



#### Machines

GW6290

---

## IRCP (art. 903000)

---

### CEILING SPRAY ARM

- ☒ additional ceiling spray arm
- ☒ improves the washing efficiency of complex glassware shapes
- ☒ made of stainless steel AISI 316L
- ☒ not compatible with the trolleys CSK6B, CSK8B, LM40S, LB16S, CSK4BMIC



#### Machines

GW0260

GW1260

GW4260

GW4290

GW5260

GW5290

---

## KITSUPPR (art. 904886)

---

### KIT WHEELS SUPPORT FOR THE UPPER BASKET IN UNDERCOUNTER

- ☒ Kit of reinforced support for the wheels of the upper basket into the undercounter machines
- ☒ compatible with all the undercounter machine models provided of internal upper level wheels
- ☒ better and quicker replacement "plug and play" of internal wheels in phase of routine maintenance of the machine



#### Machines

GW0260

GW1260

GW4260

GW4290

GW5260

GW5290

---

## LED6010 (art. 903409)

---

### LED LIGHTING FOR WASHING CHAMBER

- ☒ n. 4 LED lights ensuring complete chamber illumination
- ☒ allows chamber inspection during the washing cycle
- ☒ lights can be replaced from inside the chamber



### Machines

GW6010

GW7010

GW7015

---

## STEAMCO15 (art. 904267)

---

### ECOSLIM STEAM CONDENSER

- ☒ high efficiency condenser
- ☒ cold water spray
- ☒ to be used for eliminating exhaust air vapour
- ☒ avoids connection with exhaust air duct

### Machines

GW7015

---

## STEAMCO60 (art. 903466)

---

### ECOSLIM STEAM CONDENSER

- ☒ high efficiency condenser
- ☒ cold water spray
- ☒ to be used for eliminating exhaust air vapour
- ☒ avoids connection with exhaust air duct

### Machines

GW6010

GW7010

GW7015

---

## STEAMFEED15 (art. 904313)

---

### HYBRID STEAM HEATING FOR CHAMBER

- ☒ steam heating element for washing chamber
- ☒ efficiently reduces electrical consumption
- ☒ hybrid system electric + steam
- ☒ provided with condensed steam "loop"
- ☒ made of stainless steel

#### Machines

GW7015

---

## STEAMFEED15T (art. 904314)

---

### HYBRID STEAM HEATING FOR CHAMBER AND PRE-HEATING TANKS

- ☒ steam heating element for washing chamber and pre-heating tanks
- ☒ efficiently reduces electrical consumption
- ☒ hybrid system electric + steam
- ☒ provided with condensed steam "loop"
- ☒ made of stainless steel

#### Machines

GW7015T

---

## STEAMFEED70 (art. 904016)

---

### HYBRID STEAM HEATING

- ☒ steam heating element for washing chamber
- ☒ reduces efficiently electrical consumption
- ☒ hybrid system electric + steam
- ☒ provided with condensed steam "loop"
- ☒ made of stainless steel

#### Machines

GW7010

GW7010M

GW7010T

GW7010TM

---

## T4260AC (art. 905442)

---

### HOT WATER SUPPLY SYSTEM

- ☒ optional system for hot water machine supplying
- ☒ provided with water hose, Aquastop safety system included



### Machines

GW1260

GW4260

GW4290

---

## TOP45I (art. 902032)

---

### BUILT-IN TOP 45 CM

- ☒ for built-in mounting solution
- ☒ reduces machine height at 830 mm



### Machines

GW1245

---

## TOP60I (art. 902033)

---

### BUILT-IN TOP 60 CM

- ☒ for built-in mounting solution
- ☒ reduces machine height at 830 mm



### Machines

GW0260

GW1260

GW4260

GW5260



---

## TOP90IC (art. 903523)

---

### BUILT-IN TOP 90 CM

- ☒ for built-in mounting solution
- ☒ reduces machine height at 830 mm

### Machines

GW4290

GW5290



---

## WD-CHECK15 (art. 905102)

---

### CIRCUIT FOR WATER SAMPLE WITHDRAWAL

- ☒ Special circuit for sampling, for taking water samples from the wash tank
- ☒ The sampling tap is positioned on the loading side, accessible by opening the door of the tank compartment
- ☒ Available for 7015 series machines

### Machines

GW7015



---

## WD-CODESCAN (art. 905103)

---

### BARCODE READER

- ☒ CODE128 barcode reader
- ☒ connected to the machine by cable
- ☒ positioned on the loading side
- ☒ available for 7010-7015 series machines - not compatible with loading side printer

### Machines

GW7010

GW7015



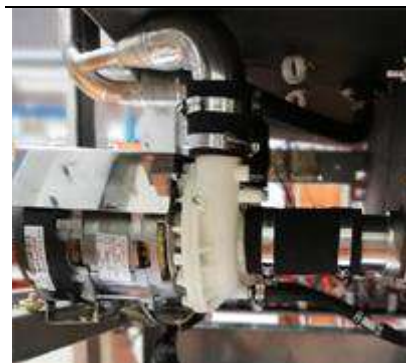
---

## WD-DRAIN15 (art. 905101)

---

### WASHING PUMP DRAIN CIRCUIT

- ☒ Draining circuit of the washing pumps
- ☒ It acts at the end of each phase of the washing cycle
- ☒ Guarantees complete emptying of the pump
- ☒ Available for 7015 series machines



### Machines

GW7015

---

## WD-EC-1 (art. 905558)

---

### SINGLE-PHASE ELECTRIC CONNECTION

- ☒ for converting the machine from the standard configuration (3/N/PE 400 V – 50 or 60 Hz) to the single-phase configuration 1/N/PE 230 V – 50 or 60 Hz
- ☒ NOTE: an authorized engineer is required for installation outside the factory

### Machines

GW0260

GW1260

GW4260

GW5260

---

## WD-EC-3 (art. 905559)

---

### THREE-PHASE WITHOUT NEUTRAL ELECTRIC CONNECTION

- ☒ for converting the machine from the standard configuration (3/N/PE 400 V – 50 or 60 Hz) to the three-phase without neutral 3/PE 230 V - 50 or 60 Hz
- ☒ NOTE: an authorized engineer is required for installation outside the factory

### Machines

GW0260

GW1260

GW4260

GW5260

---

## **WD-EC-1UK** (art. 905726)

---

### **SINGLE-PHASE ELECTRIC CONNECTION WITH UK PLUG**

- ☒ for converting the machine from the standard configuration (3/N/PE 400 V – 50 Hz) to the single-phase configuration, with UK plug and 13A protection
- ☒ NOTE: installation outside the factory requires the intervention of an authorized technician

#### **Machines**

GW0260	GW1260	GW4260	GW5260
--------	--------	--------	--------

---

## **WD-EC4290-1** (art. 905614)

---

### **SINGLE-PHASE ELECTRIC CONNECTION**

- ☒ Kit of components needed to convert the machine from the standard configuration (3/N/PE 400 V – 50 or 60 Hz)
- ☒ to single-phase configuration 1/N/PE 230 V – 50 or 60 Hz
- ☒ the components are SPECIFIC for GW and WD4290
- ☒ NOTE: A technician is required for installation

#### **Machines**

GW4290	GW5290
--------	--------

---

## **WD-EC4290-3** (art. 905615)

---

### **THREE-PHASE WITHOUT NEUTRAL ELECTRIC CONNECTION**

- ☒ kit of components needed to convert the machine from the standard configuration (3/N/PE 400 V – 50 or 60 Hz)
- ☒ to three-phase configuration without neutral 3/PE 230 V - 50 or 60 Hz
- ☒ the components are SPECIFIC for GW and WD4290
- ☒ NOTE: A technician is required for installation

#### **Machines**

GW4290	GW5290
--------	--------

---

## WD-EMS (art. 905104)

---

### ABSORBED POWER MANAGEMENT SYSTEM

- ☒ Application EMS - Energy Management System - for managing the power absorbed by machines installed in battery in the sterilization unit or big laboratories
- ☒ It displays the progress of the cycles in execution of the connected machines
- ☒ Available for 6010/7010/7015 series machines



### Machines

GW6010

GW7010

GW7015

---

## WD-SIGNBOX15 (art. 905135)

---

### FREE CONTACTS BOX FOR REMOTE SIGNAL

- ☒ Box containing 3 free contacts
- ☒ 1 general alarm contact
- ☒ 1 warning contact
- ☒ 1 contact that identifies if the cycle is in progress
- ☒ Positioned on the top of the machine
- ☒ Available for 7010 and 7015 families



### Machines

GW7010

GW7015

---

## WD-SIGNBOXIN (art. 905184)

---

### FREE CONTACTS BOX FROM EXTERNAL INPUT

- ☒ Box with 1 external clean contact supplied by electric generator, for 7015 and 7010 families
- ☒ If contact open -> generator off
- ☒ If contact closed -> generator on
- ☒ To be connected to WD-EMS to command its automatic start



### Machines

GW7010

GW7015

---

## WD-VDS (art. 902592)

---

### DUAL DRAIN VALVE

- ☒ separates and channels polluted drain water used in the first washing cycle for final rinsing water



### Machines

GW5260

GW5290

GW6290

---

## WD-VDS6010 (art. 903671)

---

### DUAL DRAIN VALVE

- ☒ separates and channels polluted drain water used in the first washing cycle for final rinsing water
- ☒ to be necessarily combined with wall drain pump (art. DRAINP6010)



### Machines

GW6010

GW7010

GW7015

---

## WD-WS6010 (art. 905553)

---

### 6010 WATER SOFTENER

- ☒ onboard water softener, with automatic regeneration managed by the processor
- ☒ salt lack sensor with visual signal on the display
- ☒ wires and brackets customized for GW and WD6010 series
- ☒ optional installed at factory

### Machines

GW6010

---

## WD-WS7010 (art. 905553)

---

### 7010 WATER SOFTENER

- ☒ onboard water softener, with automatic regeneration managed by the processor

- 
- ☒ salt lack sensor with visual signal on the display
  - ☒ wires and brakets customized for GW and WD7010 series
  - ☒ optional installed at factory

#### Machines

GW7010

---

### WD-IP216010 (art. 905707)

#### IP21 PROTECTION LEVEL

- ☒ allows the achievement of IP21 protection level: protection against dripping water
- ☒ for WD6010 version
- ☒ factory optional



#### Machines

GW6010L

GW6010LX

GW6010ML

GW6010MLX

---

### WD-IP216010T (art. 905708)

#### IP21 PROTECTION LEVEL

- ☒ allows the achievement of IP21 protection level: protection against dripping water
- ☒ for WD6010T version
- ☒ factory optional



#### Machines

GW6010T

GW6010TM

---

### WD-IP217010 (art. 905709)

#### IP21 PROTECTION LEVEL

- ☒ allows the achievement of IP21 protection level: protection against dripping water
- ☒ for 7010/7010T versions
- ☒ factory optional



#### Machines

GW7010

---

## Booster pumps for demineralized water

---

### PAD1 (art. 901394)

---

#### BOOSTER PUMP FOR NON-PRESSURE DEMINERALIZED WATER

- ☒ allows machine water supply with demineralized water drawn from a non-pressure tank positioned at a minimum height from the floor of 85 cm



#### Machines

GW0260	GW1245	GW1260	GW4260	GW4290
GW5260	GW5290			

### PAD2R (art. 903001)

---

#### PAD2 RELAY KIT

- ☒ controls PAD2 pump on basic machines



#### Machines

GW0260	GW1245	GW1260	GW4260	GW4290
GW5260	GW5290			

### PAD2X (art. 903330)

---

#### ST. STEEL BOOSTER PUMP FOR NON-PRESSURE DEMINERALIZED WATER

- ☒ used on machines for supplying demineralized water from a tank placed on the floor
- ☒ pump head made of stainless steel
- ☒ self priming
- ☒ could require PAD2R kit



#### Machines

GW0260	GW1245	GW1260	GW4260	GW4290
GW5260	GW5290	GW6290		

---

## **PAD2X-60** (art. 903332)

---

### **BOOSTER PUMP FOR NON-PRESSURE DEMINERALIZED WATER - 60 HZ**

- ☒ allows machine with demineralized water supply from a tank which must be positioned on the floor
- ☒ self priming
- ☒ suitable for 60 Hz versions
- ☒ could require PAD2R kit



## **PAD2X6010** (art. 903841)

---

### **ST. STEEL BOOSTER PUMP FOR NON-PRESSURE DEMINERALIZED WATER**

- ☒ used on machines for supplying demineralized water from a tank placed on the floor
- ☒ self priming
- ☒ pump head made of stainless steel



### **Machines**

GW6010

GW7010

GW7015



---

## Additional peristaltic pumps

---

### P14060 (art. 902904)

---

#### PERISTALTIC PUMP FOR LIQUID DETERGENT

- ☒ for dosing liquid alkaline detergent
- ☒ with stainless steel drawing pipe
- ☒ suitable for 2 liters, 5 liters, 10 liters cans

#### Machines

GW0260

GW1260

GW4260



### P14190 (art. 903418)

---

#### PERISTALTIC PUMP FOR LIQUID DETERGENT

- ☒ for dosing liquid alkaline detergent
- ☒ with stainless steel drawing pipe
- ☒ suitable for 2 liters, 5 liters, 10 liters cans

#### Machines

GW4290



### P34260 (art. 905436)

---

#### PERISTALTIC PUMP FOR CAUSTIC SODA

- ☒ for dosing caustic soda solution
- ☒ with improved PVC drawing pipe for high chemical resistance
- ☒ suitable for 2 liters, 5 liters, 10 liters cans

#### Machines

GW4260



### P34290 (art. 905438)

---

#### PERISTALTIC PUMP FOR CAUSTIC SODA

- ☒ for dosing caustic soda solution
- ☒ with improved PVC drawing pipe for high chemical resistance
- ☒ suitable for 2 liters, 5 liters cans

#### Machines

GW4290



---

## **P35260** (art. 905762)

---

### **PERISTALTIC PUMP FOR CAUSTIC SODA**

- ☒ for dosing caustic soda solution
- ☒ with improved PVC drawing pipe for high chemical resistance
- ☒ suitable for 2 liters, 5 liters, 10 liters cans



#### **Machines**

GW5260

---

## **P35290** (art. 905767)

---

### **PERISTALTIC PUMP FOR CAUSTIC SODA**

- ☒ for dosing caustic soda solution
- ☒ with improved PVC drawing pipe for high chemical resistance
- ☒ suitable for 2 liters, 5 liters, 10 liters cans



#### **Machines**

GW5290

---

## **P36010** (art. 903531)

---

### **PERISTALTIC PUMP FOR LIQUID ADDITIVES**

- ☒ for dosing liquid additives (ex: alkaline detergent, caustic solution or antifoam)
- ☒ with stainless steel drawing pipe
- ☒ suitable for 2 liters, 5 liters, 10 liters cans



#### **Machines**

GW6010

GW7010

GW7015

---

## **P36290** (art. 904769)

---

### **PERISTALTIC PUMP FOR LIQUID ADDITIVES**

- ☒ for dosing liquid additives (ex: alkaline detergent, caustic solution or antifoam)
- ☒ with stainless steel drawing pipe
- ☒ suitable for 2 liters, 5 liters, 10 liters cans

#### **Machines**

GW6290

---

## **P44260** (art. 905440)

---

### **PERISTALTIC PUMP FOR LIQUID ANTIFOAM**

- ☒ for dosing liquid antifoam
- ☒ with improved PVC drawing pipe for high chemical resistance
- ☒ suitable for 2 liters, 5 liters cans

#### **Machines**

GW4260



---

## **P44290** (art. 905441)

---

### **PERISTALTIC PUMP FOR LIQUID ANTIFOAM**

- ☒ for dosing liquid antifoam
- ☒ with improved PVC drawing pipe for high chemical resistance
- ☒ suitable for 2 liters, 5 liters cans

#### **Machines**

GW4290



---

## **P45260** (art. 905763)

---

### **PERISTALTIC PUMP FOR LIQUID ANTIFOAM**

- ☒ for dosing liquid antifoam
- ☒ with improved PVC drawing pipe for high chemical resistance
- ☒ suitable for 2 liters, 5 liters cans

#### **Machines**

GW5260



---

## **P45290** (art. 905768)

---

### **PERISTALTIC PUMP FOR LIQUID ANTIFOAM**

- ☒ for dosing liquid antifoam
- ☒ with improved PVC drawing pipe for high chemical resistance
- ☒ suitable for 2 liters, 5 liters cans

#### **Machines**

GW5290



---

## **P46010** (art. 903530)

---

### **PERISTALTIC PUMP FOR LIQUID ANTIFOAM**

- ☒ for dosing liquid antifoam
- ☒ with stainless steel drawing pipe
- ☒ suitable for 2 liters, 5 liters, 10 liters cans



#### **Machines**

GW6010T                      GW6010TM                      GW7010                      GW7015

---

## **P46010L** (art. 905017)

---

### **PERISTALTIC PUMP FOR DOSING LIQUID ADDITIVES SOLUTION TO AVOID FOAM**

- ☒ Peristaltic pump for dosing liquid additives solution to avoid foam
- ☒ With stainless steel drain
- ☒ Suitable for 2 liter, 5 liter and 10 liter tanks
- ☒ Specific for GW6010L series machines

#### **Machines**

GW6010L                      GW6010LX                      GW6010ML                      GW6010MLX

---

## **P46290** (art. 904768)

---

### **PERISTALTIC PUMP FOR LIQUID ADDITIVES**

- ☒ for dosing liquid additives (ex: alkaline detergent, caustic solution or antifoam)
- ☒ with stainless steel drawing pipe
- ☒ suitable for 2 liters, 5 liters, 10 liters cans

#### **Machines**

GW6290

---

## **P55290** (art. 905769)

---

### **PERISTALTIC PUMP FOR LIQUID ADDITIVES**

- ☒ for dosing liquid additives (ex: alkaline detergent, caustic solution or antifoam)
- ☒ with stainless steel drawing pipe
- ☒ suitable for 2 liters, 5 liters, 10 liters cans



#### **Machines**

GW5290

---

## **P56090B** (art. 903609)

---

### **PERISTALTIC PUMP FOR LIQUID ADDITIVES**

- ☒ for dosing liquid additives (ex: alkaline detergent, caustic solution or antifoam)
- ☒ with stainless steel drawing pipe
- ☒ suitable for 2 liters, 5 liters, 10 liters cans

#### **Machines**

GW6290

---

## **P57015** (art. 904266)

---

### **PERISTALTIC PUMP FOR LIQUID ADDITIVES**

- ☒ for dosing liquid additives (ex: alkaline detergent, caustic solution or antifoam)
- ☒ with stainless steel drawing pipe
- ☒ suitable for 2 liters, 5 liters, 10 liters cans



#### **Machines**

GW7015

---

## **TANKBSK** (art. 902591)

---

### **UPPER-LEVEL CAN HOLDER BASKET**

- ☒ capacity: 2 x 5 liters jerrycans
- ☒ necessary in case of additional pumps P3, P4 or P5
- ☒ expands detergent cabinet capacity from 2 to 4 x 5 liters jerrycans



#### **Machines**

GW4290

GW5290

---

## **FLUX4060** (art. 902900)

---

### **DOSING CONTROL FOR PERISTALTIC PUMPS**

- ☒ allows double control for proper dosage of detergent and liquid neutralizer



#### **Machines**

GW1260

GW4260

---

## **WD-FLUX5260** (art. 905766)

---

### **DETERGENT DOSAGE CONTROL FOR PERISTALTIC PUMPS**

- ☒ allows double control for proper dosage of detergent, liquid neutralizer or caustic soda

#### **Machines**

GW5260

---

## **WD-FLUX5290** (art. 905773)

---

### **DETERGENT DOSAGE CONTROL FOR PERISTALTIC PUMPS**

- ☒ allows double control for proper dosage of detergent, liquid neutralizer, caustic soda or liquid additive

#### **Machines**

GW5290

---

## **WD-FLUX6010** (art. 903459)

---

### **DETERGENT DOSAGE CONTROL FOR PERISTALTIC PUMPS**

- ☒ allows double control for proper dosage of detergent, liquid neutralizer, caustic soda or liquid additive



#### **Machines**

GW6010

GW7010

GW7015

---

## **WD-FLUX6290** (art. 904770)

---

### **DETERGENT DOSAGE CONTROL FOR PERISTALTIC PUMPS**

- ☒ allows double control for proper dosage of detergent and liquid neutralizer, caustic soda or liquid additive

#### **Machines**

GW6290

---

## WD-LS3060 (art. 902084)

---

### DETERGENT LEVEL SENSOR

- ☒ with adjustable sensor for cans of different heights
- ☒ suitable for all models from 45 - 60 cm



### Machines

GW1260

GW1245

GW4260

GW5260

---

## WD-LS4190 (art. 903167)

---

### DETERGENT LEVEL SENSOR

- ☒ with adjustable sensor for cans of different heights
- ☒ suitable for 90 cm models



### Machines

GW4290

GW5290

---

## WD-LS6010 (art. 903525)

---

### DETERGENT LEVEL SENSOR

- ☒ with adjustable sensor for cans of different heights
- ☒ suitable for 6010/7010/6290 series



### Machines

GW6010

GW6290

GW7010

GW7015

---

## Traceability

---

### KITCON232 (art. 903284)

---

#### RS232 CONNECTION KIT

- ☒ RS232 – USB converter
- ☒ male – female straight connecting cable
- ☒ female – female crossover connecting cable



### KITSOND (art. 905066)

---

#### KIT FOR TEMPERATURE PROBE ACCESS

- ☒ pass-through hole for access to the washing chamber, for temperature probes
- ☒ normally closed with 3/8" cap, useful diameter 1/2"
- ☒ for traceability and validation activities
- ☒ placed under the top covering, in the upper part of the machine on the right side

#### Machines

GW0260	GW1260	GW1245	GW4260	GW4290
GW5260	GW5290			

### KITSOND10 (art. 904433)

---

#### KIT FOR TEMPERATURE PROBE ACCESS

- ☒ pass-through hole for access to the washing chamber, for temperature probes
- ☒ normally closed with 3/8" cap, useful diameter 1/2"
- ☒ for traceability and validation activities
- ☒ placed under the top covering, in the upper part of the machine on the right side

#### Machines

GW6010L	GW6010LX	GW6010ML	GW6010MLX
---------	----------	----------	-----------



---

## WD-232PRINT (art. 905557)

---

### SERIAL PORT RS232

- ☒ RS232 serial port, for external printer (art. WD-PRINTE)



### Machines

GW1260	GW1245	GW4260	GW4290	GW5260
GW5290				

---

## WD-LAN60 (art. 903460)

---

### DATA COMMUNICATION CARD

- ☒ Device for LAN ethernet connection to the machine
- ☒ Makes monitoring and communication possible from every access point to the LAN net
- ☒ To be configured as in the instruction manual

### Machines

GW6010	GW7010	GW6290	GW7015
--------	--------	--------	--------

---

## WD-LANI2 (art. 905555)

---

### COMMUNICATION LAN CARD

- ☒ data communication card
- ☒ equipped with RS232 serial port for connection to an external printer
- ☒ equipped with a LAN port for ethernet connection which allows communication and monitoring of the machine from any access point in the local network
- ☒ to be set using the instructions in the installation manual



### Machines

GW1260	GW1245	GW4260	GW5260
--------	--------	--------	--------

---

## WD-LAN4290 (art. 905443)

---

### COMMUNICATION LAN CARD

- ☒ data communication card
- ☒ equipped with RS232 serial port for connection to an external printer
- ☒ equipped with a LAN port for ethernet connection which allows communication and monitoring of the machine from any access point in the local network
- ☒ to be set using the instructions in the installation manual



### Machines

GW4290

GW5290

---

## WD-PRINT4290 (art. 905444)

---

### PANEL PRINTER

- ☒ dot matrix thermal printing
- ☒ real time clock
- ☒ for panel fastening
- ☒ dimensions LxDxH: 120 x 170 x 40 mm
- ☒ thermal paper roll diameter: 50 mm - width: 57 mm (art. WD-PAPER)



### Machines

GW4290

---

## WD-PRINT5290 (art. 905799)

---

### PANEL PRINTER

- ☒ dot matrix thermal printing
- ☒ real time clock
- ☒ for panel fastening
- ☒ dimensions LxDxH: 120 x 170 x 40 mm
- ☒ thermal paper roll diameter: 50 mm - width: 57 mm (art. WD-PAPER)



### Machines

GW5290

---

## WD-PRINT6290 (art. 904555)

---

### PANEL PRINTER

- ☒ dot matrix thermal printing
- ☒ real time clock
- ☒ for panel fastening
- ☒ dimensions LxDxH: 120 x 170 x 40 mm
- ☒ thermal paper roll diameter: 50 mm - width: 57 mm (cod. WD-PAPER)

### Machines

GW6290

---

## WD-PRINTE2 (art. 905556)

---

### EXTERNAL PRINTER

- ☒ external printer
- ☒ including RS232 serial port card
- ☒ for dot matrix thermal printing
- ☒ complete with clock function
- ☒ to be combined with a roll of thermal paper diameter 50 mm - width 57 mm (art. WD-PAPER)
- ☒ equipped with independent power supply
- ☒ NOTE: authorized engineer is required for installation



### Machines

GW1260

GW1245

GW4260

GW5260

---

## WD-PRINTEINK (art. 903740)

---

### EXTERNAL IMPACT PRINTER

- ☒ impact printer
- ☒ paper roll diameter: 50 mm - width: 57 mm (cod. CARTADP24)
- ☒ equipped with independent power supply



### Machines

GW6010

GW7010

GW7015

---

## WD-PRINTP6010 (art. 903462)

---

### CLEAN SIDE PANEL PRINTER

- ☒ dot matrix thermal printing
- ☒ real time clock
- ☒ fitted on clean side panel
- ☒ dimensions LxDxH: 120 x 170 x 40 mm
- ☒ thermal paper roll diameter: 50 mm - width: 57 mm (cod. WD-PAPER)

### Machines

GW6010



---

## WD-PRINTP7010 (art. 903463)

---

### CLEAN SIDE PANEL PRINTER

- ☒ dot matrix thermal printing
- ☒ real time clock
- ☒ fitted on clean side panel
- ☒ dimensions LxDxH: 120 x 170 x 40 mm
- ☒ thermal paper roll diam. 50 mm width 57 mm (cod. WD-PAPER)

### Machines

GW7010

GW7015



---

## WD-PRINTS6010 (art. 903407)

---

### UNCLEAN SIDE PANEL PRINTER

- ☒ dot matrix thermal printing
- ☒ real time clock
- ☒ fitted on unclean side panel
- ☒ dimensions LxDxH: 120 x 170 x 40 mm
- ☒ thermal paper roll diameter: 50 mm - width: 57 mm (cod. WD-PAPER)

### Machines

GW6010



---

## WD-PRINTS7010 (art. 903464)

---

### UNCLEAN SIDE PANEL PRINTER

- ☒ dot matrix thermal printing
- ☒ real time clock
- ☒ fitted on unclean side panel
- ☒ dimensions LxDxH: 120 x 170 x 40 mm
- ☒ thermal paper roll diam. 50 mm width 57 mm (cod. WD-PAPER)



### Machines

GW7010

GW7015

---

## Machine accessories

---

### CP3050 (art. 900922)

---

#### CABINET FOR DETERGENTS AND DEMINERALIZER

- ☒ cabinet for housing cans of detergent or demineralization columns
- ☒ mountable beside the washing machine
- ☒ dimensions LxDxH: 300 x 600 x 850 mm



### KITWHEELS (art. 905145)

---

#### KIT FOR CONVERSION OF INSERT FOR TROLLEYS

- ☒ Wheel kit for converting the inserts for CLB310UNIV trolley (eg INSxxyy) into the corresponding inserts for machines with rails into the chamber (eg INSxxyyR)
- ☒ Installation instructions included in the kit



---

## Plinths and support frames

---

### **B6040L** (art. 902487)

---

#### **STAINLESS STEEL PLINTH FOR 60 CM MACHINES WITH LOCK**

- ☒ dimensions LxDxH: 600 x 530 x 400 mm
- ☒ increases the machine working level to 70 cm from the floor
- ☒ detergent cabinet with front door
- ☒ equipped with adjustable feet
- ☒ detergent cabinet with anti-drop tray
- ☒ front door with lock
- ☒ made of stainless steel
- ☒ NOTE: if the optional level sensor is missing, it could be necessary to replace the detergent extractor unit with the short type available as a spare part (Cod. 690073656; Ref.Num. 115012)



#### **Machines**

GW0260

GW1260

GW4260

GW5260

### **B9040L** (art. 902813)

---

#### **STAINLESS STEEL PLINTH FOR 90 CM MACHINES WITH LOCK**

- ☒ dimensions LxDxH: 900 x 530 x 400 mm
- ☒ increases the machine working level to 70 cm from the floor
- ☒ detergent cabinet with front door
- ☒ equipped with adjustable feet
- ☒ detergent cabinet with anti-drop tray
- ☒ front door with lock
- ☒ made of stainless steel



#### **Machines**

GW4290

GW5290

---

## T6040 (art. 902416)

---

### STAINLESS STEEL FRAME FOR 60 CM MACHINES

- ☒ dimensions LxDxH: 600 x 530 x 400 mm
- ☒ increases the machine working level to 70 cm from the floor
- ☒ facilitates cleaning the machine underneath
- ☒ made of stainless steel



#### Machines

GW0260

GW1260

GW4260

GW5260

---

## T9040 (art. 902415)

---

### STAINLESS STEEL FRAME FOR 90 CM MACHINES

- ☒ dimensions LxDxH: 900 x 530 x 400 mm
- ☒ increases the machine working level to 70 cm from the floor
- ☒ facilitates cleaning the machine underneath
- ☒ made of stainless steel



#### Machines

GW4290

GW5290



---

## Water Treatment: Demineralizer

---

### WO-20-01 (art. 090012)

---

#### PURIFIER FOR REVERSE OSMOSIS IN STAINLESS STEEL

- ☒ electronic control panel with advanced programming
- ☒ alarm for filter depletion
- ☒ alarm for lack of water supply
- ☒ alarm for anti-flood with automatic blocking system
- ☒ automatic timed wash of membranes in case of prolonged inactivity
- ☒ counters for hours and liters
- ☒ water outlet conductivity (min-max): 5-30  $\mu\text{S}/\text{cm}$
- ☒ hourly production: 120 liters/h at 15° C (water temperature) drain flow 480 liters/h
- ☒ production and conductivity depend on both the chemical characteristics of the water inlet and the clogging of the membranes
- ☒ recovery rate (max): 30% at 30 °C
- ☒ pre-treatment on water inlet: activated carbon filter
- ☒ water inlet pressure (min / max): 1,5 - 6 bar
- ☒ water inlet hardness (max): 40 °f with pH max 7.5
- ☒ water inlet temperature (min-max): 5-30 °C
- ☒ water inlet conductivity (max): 2000  $\mu\text{S}/\text{cm}$
- ☒ external dimensions LxDxH: 150 x 490 x 550 mm
- ☒ weight (net / gross): 25 / 26 kg
- ☒ electrical connection: 1/N/PE 230 V - 50 Hz - 690 W (max 3 A)



---

## **WO-30-01** (art. 090013)

---

### **PURIFIER FOR REVERSE OSMOSIS IN STAINLESS STEEL**

- ☒ storage tank capacity 12 L
- ☒ electronic control panel with advanced programming
- ☒ filter burnout alarm
- ☒ alarm for lack of water (pump dryness protection)
- ☒ anti-flooding alarm with automatic blocking
- ☒ automatic timed membrane washing in case of prolonged inactivity
- ☒ hour counter and liter counter
- ☒ outlet water conductivity (min-max): 5-30  $\mu\text{S}/\text{cm}$
- ☒ hourly production: 240 litres/h at 15° C (water temp.)
- ☒ production and conductivity depend on the chemical characteristics of the incoming water and the state of clogging of the membranes
- ☒ recovery rate (max): 35% at 25°C
- ☒ inlet water pressure (min-max): 1.5 - 6 bar
- ☒ inlet water hardness (max): 35 with max pH 7.5
- ☒ inlet water temperature (min-max): 5-30 °C
- ☒ inlet water conductivity (max): 1200  $\mu\text{S}/\text{cm}$
- ☒ external dimensions WxDxH: 300 x 445 x 700 mm
- ☒ electrical connection: 1/N/PE 230 V - 50 Hz - 690 W (max 3 A)



---

## **WP3010** (art. 905041)

---

### **WATER PURIFIER - MIXED BED RESIN**

- ☒ to provide demineralized water from tap water
- ☒ conductivity sensor included to indicate exhausted resins
- ☒ external dimensions LxDxH: 300 x 660 x 850 mm
- ☒ complete with CL3000 column
- ☒ resins kit MI700WP
- ☒ auxiliary draw-off valve accessible from the cabinet door



---

## Water systems accessories

---

### IC3000 (art. 901210)

---

#### DIGITAL CONDUCTIVITY INDICATOR FOR WP3000

- ☒ to monitorize the conductivity on water inlet
- ☒ range  $0.01 \div 19.99 \mu\text{S} \pm 2\%$
- ☒ temperature compensation and alarm LED with adjustable set point  $1-5 \mu\text{S}$
- ☒ inlet/outlet connectors  $3/4"$
- ☒ sensor cable lenght 2 m
- ☒ power supply 12 V



### PD50 (art. 900984)

---

#### AUXILIARY TANK 50L

- ☒ 50 liters tank
- ☒ suitable to provide demineralized water to the washer machine
- ☒ made of PE-HD
- ☒  $3/4"$  BSP tap
- ☒ dimensions DIAMETERxH: 340 x 640 mm



### PDA41 (art. 904235)

---

#### AUTOCLAVED 41L WATER TANK

- ☒ 41 liter pressurized diaphragm tank
- ☒ suitable to provide demineralized water to the washer machine
- ☒ external surface in steel painted white
- ☒ 1" female BSPP connection
- ☒ equipped with threaded extender M1 x  $1/4"$ , completed with elbow ball valve with  $3/8"$  hose connection
- ☒ maximum working pressure: 7 bar
- ☒ minimum working pressure: 1 bar
- ☒ dimensions DIAMETERxH: 390 x 575 mm



---

## **PDA75** (art. 901578)

---

### **AUTOCLAVED 75L WATER TANK**

- ☒ 75 liters tank
- ☒ suitable to provide demineralized water to the washer machine
- ☒ epoxy primed paint finish
- ☒ high grade butyl diaphragm
- ☒ virgin polypropylene liner
- ☒ maximum working pressure: 7 bar
- ☒ tank pre-charge: 0.5 bar
- ☒ dimensions DIAMETERxH: 400 x 800 mm



---

## **SDA100** (art. 901021)

---

### **AUXILIARY TANK 100L WITH AUTOMATIC LEVEL CONTROL**

- ☒ 100 liters tank
- ☒ suitable to provide demineralized water to the washer machine
- ☒ made of PE-HD
- ☒ with automatic level control for external water feeding
- ☒ compatible with demi water booster pump PAD
- ☒ rapid connection for 8 mm pipes in PE
- ☒ connection for demineralised water inlet
- ☒ connection for water inlet by auxiliary system
- ☒ 3/4" BSP tap
- ☒ dimensions DIAMETERxH: 450 x 820 mm



---

## **SDA50** (art. 901020)

---

### **AUXILIARY TANK 50L WITH AUTOMATIC LEVEL CONTROL**

- ☒ 50 liters tank
- ☒ suitable to provide demineralized water to the washer machine
- ☒ made of PE-HD
- ☒ with automatic level control for external water feeding
- ☒ compatible with demi water booster pump PAD
- ☒ rapid connection for 8 mm pipes in PE
- ☒ connection for demineralised water inlet
- ☒ connection for water inlet by auxiliary system
- ☒ 3/4" BSP tap
- ☒ dimensions DIAMETERxH: 340 x 640 mm



---

## Consumables

---

### **CARTADP24** (art. 901367)

---

#### **PRINTER PAPER DP24/3RTC**

☒ 10 roll pack



### **INKDP24** (art. 901368)

---

#### **INK FOR PRINTER DP24/3RTC**

☒ single package cartridge

### **KTANK** (art. 904162)

---

#### **TOOL FOR OPENING JERRYCANS**

☒ double-key for opening Dr. Weigert and SMEG canisters



### **SACCRES** (art. 901378)

---

#### **RESINS DISPOSAL BAG**

☒ exhausted resin disposal bag

---

## **WD-PAPER** (art. 901709)

---

### **THERMAL PAPER FOR PRINTER**

- ☒ package of 10 rolls
- ☒ to be used with printers WD-PRINT, WD-PRINTE



---

## **WD-RIBBON** (art. 904008)

---

### **RIBBON FOR WD-PRINTEINK**

- ☒ ribbon for WD-PRINTEINK
- ☒ dimensions 57 mm x 74 M
- ☒ n. 4 pieces per box



---

## **CL3000** (art. 900186)

---

### **EMPTY RESINS CONTAINER**

- ☒ capacity: 15 liters for WP3000
- ☒ made of stainless steel AISI 316L
- ☒ jolly fast connectors included



---

## **MI700WP** (art. 900166)

---

### **RESIN KIT REFILL - FOR 15 LITER CONTAINER**

- ☒ mixed bed resins kit for WP3000 water purifier
- ☒ supplied with used resin disposal bag
- ☒ stainless steel resin container CL3000 not included



---

## **980103** (art. 980103)

---

### **SPECIAL SALT TABLETS FOR EXTERNAL WATER SOFTENERS**

- ☒ 25 Kg pack



---

## **SALE** (art. 901358)

---

### **SPECIAL SALT FOR INCORPORATED WATER SOFTENER**

- ☒ single pack of 20 kg (20 boxes of 1 Kg each)

---

## **FLT06WO20-30** (art. 904610)

---

### **ACTIVATED CARBON FILTER**

- ☒ activated carbon filter compatible with the reverse osmosis range WO-20 and WO-30
- ☒ filtering capacity about 15.000 liters
- ☒ contains 6 filters

---

## Detergents and additives

---

### ACIDGLC2 (art. 901117)

---

#### ACIDGLASS C2

- ☒ liquid phosphate-free neutralizer
- ☒ containing citric acid monohydrate
- ☒ 5 liters can



### ACIDGLP2 (art. 901171)

---

#### ACIDGLASS P2

- ☒ acid liquid neutralizing agent for laboratory glassware
- ☒ containing phosphoric acid, citric acid monohydrate
- ☒ 5 liters can



### DETERGLASS3 (art. 905800)

---

#### DETERGLASS3

- ☒ universal alkaline powder detergent for automatic washing of laboratory glassware
- ☒ Pack of 2 drums of 5kg each (not sold separately)





---

## DETERLQC2 (art. 901116)

---

### DETERLIQUID C2

- ☒ strong universal liquid alkaline detergent phosphate-free for washing steel up to 95 °C
- ☒ also suitable for washing rubber and plastic at 60 °C
- ☒ containing sodium silicate, polyacrylate, potassium hydroxide
- ☒ 5 liters can



---

## DETERLQI2 (art. 904541)

---

### DETERLIQUID I2

- ☒ liquid alkaline detergent
- ☒ containing sodium hydroxide, phosphonic-carboxylic acid, sodium hypochlorite
- ☒ 5 liters can



---

## DETERLQSP2 (art. 903659)

---

### DETERLIQUID SP2

- ☒ liquid alkaline detergent phosphate free for water analysis and pharmaceuticals
- ☒ containing potassium hydroxide, sodium hydroxide
- ☒ 5 liters can



---

## ANTI-FOAM (art. 905801)

---

### ANTI-FOAM

- ☒ Anti-foam liquid additive
- ☒ 5 liters can

---

## Spare parts

---

### IMBUTOLM (art. 900099)

---

#### FUNNEL FOR INJECTION TROLLEY

- ☒ manifold for the water flow into the injection trolley



### KIT-GW1160Y1 (art. 904337)

---

#### SPARE PARTS KIT FOR GW1160 PREVENTIVE MAINTENANCE - YEAR 1

- ☒ n. 1 Water softner ring 80mm
- ☒ n. 1 Water softner ring 61mm
- ☒ n. 1 Upper water collector gasket
- ☒ n. 2 Filter intake hose
- ☒ n. 1 Hose for detergent - coil 5m
- ☒ n. 1 Hose for neutralizer - coil 5m
- ☒ n. 2 Peristaltic pump inner tube
- ☒ for GW1160 preventive maintenance - YEAR 1

#### Machines

GW1260

### KIT-GW1160Y2 (art. 904338)

---

#### SPARE PARTS KIT FOR GW1160 PREVENTIVE MAINTENANCE - YEAR 2

- ☒ n. 1 Water softner ring 80mm
- ☒ n. 1 Water softner ring 61mm
- ☒ n. 1 Upper water collector gasket
- ☒ n. 2 Filter intake hose
- ☒ n. 1 Hose for detergent - coil 5m
- ☒ n. 1 Hose for neutralizer - coil 5m
- ☒ n. 2 Peristaltic pump inner tube
- ☒ n. 1 Washing chamber gasket
- ☒ n. 1 Washing chamber filter
- ☒ n. 1 Drain pump filter
- ☒ n. 1 Bubble trap
- ☒ n. 1 Flow regulator
- ☒ for GW1160 preventive maintenance - YEAR 2

#### Machines

GW1260

---

## **KIT-GW1160Y3** (art. 904339)

---

### **SPARE PARTS KIT FOR GW1160 PREVENTIVE MAINTENANCE - YEAR 3**

- ☒ n. 1 Water softner ring 80mm
- ☒ n. 1 Water softner ring 61mm
- ☒ n. 1 Upper water collector gasket
- ☒ n. 2 Filter intake hose
- ☒ n. 1 Hose for detergent - coil 5m
- ☒ n. 1 Hose for neutralizer - coil 5m
- ☒ n. 2 Peristaltic pump inner tube
- ☒ n. 2 Water intake flowmeter
- ☒ n. 1 Water softner cap
- ☒ n. 1 Pressure switch PLA
- ☒ n. 1 Pressure switch PAP
- ☒ n. 2 Steam condenser nozzle
- ☒ n. 2 Retainer for front wheels
- ☒ n. 4 Wheels support and guide
- ☒ n. 1 Washing pump rotor gasket
- ☒ for GW1160 preventive maintenance - YEAR 3

#### **Machines**

GW1260

---

## **KIT-GW2145Y1** (art. 904330)

---

### **SPARE PARTS KIT FOR GW2145 PREVENTIVE MAINTENANCE - YEAR 1**

- ☒ n. 1 Water softner ring 80mm
- ☒ n. 1 Water softner ring 61mm
- ☒ n. 1 Upper water collector gasket
- ☒ n. 2 Filter intake hose
- ☒ n. 1 Hose for detergent - coil 5m
- ☒ n. 1 Hose for neutralizer - coil 5m
- ☒ n. 2 Peristaltic pump inner tube
- ☒ for GW2145 preventive maintenance - YEAR 1

#### **Machines**

GW1245

---

## **KIT-GW2145Y2** (art. 904332)

---

### **SPARE PARTS KIT FOR GW2145 PREVENTIVE MAINTENANCE - YEAR 2**

- ☒ n. 1 Water softner ring 80mm
- ☒ n. 1 Water softner ring 61mm
- ☒ n. 1 Upper water collector gasket
- ☒ n. 2 Filter intake hose
- ☒ n. 1 Hose for detergent - coil 5m
- ☒ n. 1 Hose for neutralizer - coil 5m
- ☒ n. 2 Peristaltic pump inner tube
- ☒ n. 2 Detergent flowmeter
- ☒ n. 1 Washing chamber gasket
- ☒ n. 1 Washing chamber filter
- ☒ n. 1 Bubble trap
- ☒ for GW2145 preventive maintenance - YEAR 2

#### **Machines**

GW1245

---

## **KIT-GW2145Y3** (art. 904334)

---

### **SPARE PARTS KIT FOR GW2145 PREVENTIVE MAINTENANCE - YEAR 3**

- ☒ n. 1 Water softner ring 80mm
- ☒ n. 1 Water softner ring 61mm
- ☒ n. 1 Upper water collector gasket
- ☒ n. 2 Filter intake hose
- ☒ n. 1 Hose for detergent - coil 5m
- ☒ n. 1 Hose for neutralizer - coil 5m
- ☒ n. 2 Peristaltic pump inner tube
- ☒ n. 2 Water intake flowmeter
- ☒ n. 1 Water softner cap
- ☒ n. 1 Pressure switch PLA
- ☒ n. 1 Pressure switch PAP
- ☒ n. 2 Steam condenser nozzle
- ☒ n. 2 Retainer for front wheels
- ☒ n. 4 Wheels support and guide
- ☒ n. 1 Washing pump rotor gasket
- ☒ for GW2145 preventive maintenance - YEAR 3

#### **Machines**

GW1245

---

## **KIT-GW4060Y1** (art. 904346)

---

### **SPARE PARTS KIT FOR GW4060 PREVENTIVE MAINTENANCE - YEAR 1**

- ☒ n. 1 Water softner ring 80mm
- ☒ n. 1 Water softner ring 61mm
- ☒ n. 1 Upper water collector gasket
- ☒ n. 2 Filter intake hose
- ☒ n. 1 Hose for detergent - coil 5m
- ☒ n. 1 Hose for neutralizer - coil 5m
- ☒ n. 2 Peristaltic pump inner tube
- ☒ for GW4060 preventive maintenance - YEAR 1

#### **Machines**

GW4260

---

## **KIT-GW4060Y2** (art. 904347)

---

### **SPARE PARTS KIT FOR GW4060 PREVENTIVE MAINTENANCE - YEAR 2**

- ☒ n. 1 Water softner ring 80mm
- ☒ n. 1 Water softner ring 61mm
- ☒ n. 1 Upper water collector gasket
- ☒ n. 2 Filter intake hose
- ☒ n. 1 Hose for detergent - coil 5m
- ☒ n. 1 Hose for neutralizer - coil 5m
- ☒ n. 2 Peristaltic pump inner tube
- ☒ n. 1 Washing chamber gasket
- ☒ n. 1 Washing chamber filter
- ☒ n. 1 Drain pump filter
- ☒ n. 1 Bubble trap
- ☒ n. 1 Flow regulator
- ☒ for GW4060 preventive maintenance - YEAR 2

#### **Machines**

GW4260

---

## **KIT-GW4060Y3** (art. 904348)

---

### **SPARE PARTS KIT FOR GW4060 PREVENTIVE MAINTENANCE - YEAR 3**

- ☒ n. 1 Water softner ring 80mm
- ☒ n. 1 Water softner ring 61mm
- ☒ n. 1 Upper water collector gasket
- ☒ n. 2 Filter intake hose
- ☒ n. 1 Hose for detergent - coil 5m
- ☒ n. 1 Hose for neutralizer - coil 5m
- ☒ n. 2 Peristaltic pump inner tube
- ☒ n. 2 Water intake flowmeter
- ☒ n. 1 Water softner cap
- ☒ n. 1 Pressure switch PLA
- ☒ n. 1 Pressure switch PAP
- ☒ n. 2 Steam condenser nozzle
- ☒ n. 2 Retainer for front wheels
- ☒ n. 4 Wheels support and guide
- ☒ n. 1 Washing pump rotor gasket
- ☒ for GW4060 preventive maintenance - YEAR 3

### **Machines**

GW4260

---

## **KITPETROL** (art. 903400)

---

### **SPARE PARTS KIT FOR PETROCHEMICAL APPLICATIONS**

- ☒ spare parts kit for glassware washer used in petrochemical industries
- ☒ for periodic maintenance

---

## **KITPETROL10** (art. 904097)

---

### **SPARE PARTS KIT FOR PETROCHEMICAL APPLICATIONS**

- ☒ spare parts kit for glassware washer used in petrochemical industries
- ☒ for periodic maintenance on 6010/7010 models

---

## KITSCB55 (art. 904608)

---

### BOTTLES NECK SUPPORT

- ☒ n. 5 bottles neck support high profile
- ☒ n. 5 bottles neck support low profile



---

## KU40 (art. 901038)

---

### SPARE KIT FOR NOZZLES

- ☒ n. 40 glassware support nozzles diameter 3-4-6 mm
- ☒ n. 80 plastic tips diameter 3-4-6 mm
- ☒ special key for nozzles



---

## LS5000 (art. 970055)

---

### CAN WITH SENSOR LEVEL GROUP

- ☒ 2 liters can
- ☒ top with sucking tube
- ☒ level sensor



---

## LS5010 (art. 970092)

---

### SENSOR LEVEL GROUP

- ☒ top with sucking tube
- ☒ level sensor



---

## **PSCN1** (art. 900817)

---

### **SUCKING TUBE IN STAINLESS STEEL**

- ☒ sucks liquid detergents from 5 and 12 liter cans



---

## **RUOTCS1** (art. 901698)

---

### **CASTORS CONVERSION KIT**

- ☒ used to adapt the upper trolley CS1-1 on to the old guide rails used in machines manufactured before January 2007

---

## **RUOTCS1-1** (art. 901697)

---

### **CASTORS CONVERSION KIT**

- ☒ used to adapt the upper trolley CS1 on to the new guide rails used in machines manufactured after January 2007



---

## **TAPPOSALE** (art. 901342)

---

### **SALT CONTAINER TOP**

- ☒ integrated water softener salt tank closure top





---

## TAPPOUG (art. 903297)

---

### TROLLEY NOZZLE CAP

- ☒ for closing unused nozzle
- ☒ made of stainless steel



## TASC (art. 905131)

---

### HOT WATER INTAKE HOSE WITH ACQUASTOP SYSTEM

- ☒ Hot water intake hose
- ☒ Length 3,2 m
- ☒ Supplied with AcquaStop system at water tap side
- ☒ 3/4" connection



### Machines

GW6010

GW7010

GW7015

## TASD (art. 905129)

---

### DEMINERALIZED WATER INTAKE HOSE WITH ACQUASTOP SYSTEM

- ☒ Demineralized water intake hose
- ☒ Length 3,2 m
- ☒ Supplied with AcquaStop system at water tap side
- ☒ 3/4" connection



### Machines

GW6010

GW7010

GW7015

---

## **TASF** (art. 905130)

---

### **COLD WATER INTAKE HOSE WITH ACQUASTOP SYSTEM**

- ☒ Cold water intake hose
- ☒ Length 3,2 m
- ☒ Supplied with AcquaStop system at water tap side
- ☒ 3/4" connection



### **Machines**

GW6010

GW7010

GW7015

---

## **TC40** (art. 900369)

---

### **CENTER TUBE FOR TROLLEY LM40**

- ☒ manifold for the water flow into the injection trolley



---

## **TC40DS** (art. 900221)

---

### **CENTER TUBE FOR TROLLEY LM40DS WITH DRYING SYSTEM**

- ☒ manifold for the water flow into the injection trolley
- ☒ with drying system collector



---

## **TC80** (art. 901554)

---

### **CENTER TUBE FOR TROLLEY LM80**

- ☒ manifold for the water flow into the injection trolley



## **TC80DS** (art. 900222)

---

### **CENTER TUBE FOR TROLLEY LM80DS WITH DRYING SYSTEM**

- ☒ manifold for the water flow into the injection trolley
- ☒ with drying system collector



## **U12300** (art. 904004)

---

### **NOZZLE IN STAINLESS STEEL**

- ☒ dimensions DIAMETERxH: 12 x 300 mm



---

## U12390 (art. 904005)

---

### NOZZLE IN STAINLESS STEEL

☒ dimensions DIAMETERxH: 12 x 390 mm



---

## U14450 (art. 904006)

---

### NOZZLE IN STAINLESS STEEL

☒ dimensions DIAMETERxH: 14 x 450 mm



---

## U26205 (art. 904007)

---

### NOZZLE IN STAINLESS STEEL

☒ dimensions DIAMETERxH: 26 x 205 mm

☒ compatible with the following trolleys: C65-I, C65-S, LB1-20DS



---

## **ADATM20-F1/2** (art. 905667)

---

### **NOZZLE U26205 ADAPTER**

- ☒ adapter for using the U26205 nozzle on the LM6-5 trolley
- ☒ total height of nozzle with adapter: 230 mm

---

## **ADAP4-8** (art. 905609)

---

### **PIPETTE 4-8 MM ADAPTER**

- ☒ small diameter pipette adapter
- ☒ to be applied on KPxxx type pipette washing supports/manifolds
- ☒ suitable for LPT100 trolley
- ☒ to allow treatment of small diameter pipettes, min 4 mm
- ☒ made in POM



---

## **NIPFFM20M8** (art. 905602)

---

### **REDUCING NIPPLE FROM M20 TO M8**

- ☒ M20 to M8 reducing nipple to be used to fit U6xxx (larger diameter) nozzles to standard nozzle fittings

---

## **U355** (art. 903346)

---

### **NOZZLE IN STAINLESS STEEL**

- ☒ dimensions DIAMETERxH: 3 x 55 mm
- ☒ radial sprayer
- ☒ for cleaning glass tubes

---

## U3110 (art. 900177)

---

### NOZZLE IN STAINLESS STEEL

☒ dimensions DIAMETERxH: 3 x 110 mm



---

## U3215 (art. 900379)

---

### RADIAL NOZZLE IN STAINLESS STEEL

☒ dimensions DIAMETERxH: 3 x 215 mm

☒ radial sprayer

☒ for cleaning glass tubes



---

## U390 (art. 900176)

---

### NOZZLE IN STAINLESS STEEL

☒ dimensions DIAMETERxH: 3 x 90 mm



---

## **U4140** (art. 900178)

---

### **NOZZLE IN STAINLESS STEEL**

☒ dimensions DIAMETERxH: 4 x 140 mm



---

## **U4160** (art. 900179)

---

### **NOZZLE IN STAINLESS STEEL**

☒ dimensions DIAMETERxH: 4 x 160 mm



---

## **U4180** (art. 900180)

---

### **NOZZLE IN STAINLESS STEEL**

☒ dimensions DIAMETERxH: 4 x 180 mm



---

## **U4260** (art. 901744)

---

### **NOZZLE IN STAINLESS STEEL**

☒ dimensions DIAMETERxH: 4 x 260 mm



---

## **U490** (art. 904013)

---

### **NOZZLE IN STAINLESS STEEL**

☒ dimensions DIAMETERxH: 4 x 90 mm



---

## **U6170** (art. 902134)

---

### **NOZZLE IN STAINLESS STEEL**

☒ dimensions DIAMETERxH: 6 x 170 mm





---

## **U6220** (art. 900181)

---

### **NOZZLE IN STAINLESS STEEL**

☒ dimensions DIAMETERxH: 6 x 220 mm



---

## **U6240** (art. 900182)

---

### **NOZZLE IN STAINLESS STEEL**

☒ dimensions DIAMETERxH: 6 x 240 mm



---

## **U6260** (art. 900183)

---

### **NOZZLE IN STAINLESS STEEL**

☒ dimensions DIAMETERxH: 6 x 260 mm



---

## **U6300** (art. 904014)

---

### **NOZZLE IN STAINLESS STEEL**

☒ dimensions DIAMETERxH: 6 x 300 mm



---

## U6370 (art. 900521)

---

### DUAL SPRAYER NOZZLE IN STAINLESS STEEL

- ☒ dimensions DIAMETERxH: 6 x 370 mm
- ☒ radial and vertical sprayer
- ☒ for cleaning cylinders and large bottles height 450-500 mm on trolleys  
LM40 - LPM20/20 - LB8 - LB16I



---

## U675 (art. 904015)

---

### NOZZLE IN STAINLESS STEEL

- ☒ dimensions DIAMETERxH: 6 x 75 mm



---

## U690 (art. 904012)

---

### NOZZLE IN STAINLESS STEEL

- ☒ dimensions DIAMETERxH: 6 x 90 mm



---

## **UB05** (art. 902653)

---

### **NOZZLE FOR BUTYROMETERS IN STAINLESS STEEL**

- ☒ flat nozzle
- ☒ dimensions LxDxH: 2 x 3 x 180 mm
- ☒ suitable for butyrometers Gerber 0.5%

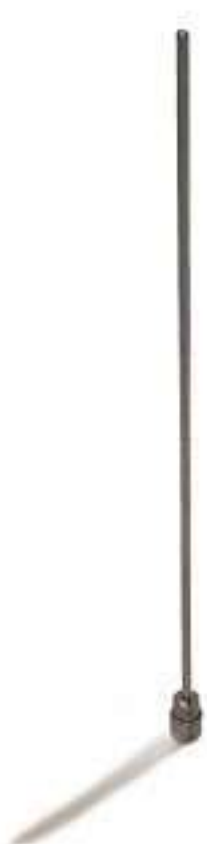
---

## **UB12** (art. 900233)

---

### **NOZZLE FOR BUTYROMETERS IN STAINLESS STEEL**

- ☒ dimensions LxDxH: 2 x 3 x 110 mm
- ☒ suitable for butyrometers Gerber 12%



---

## **UB4** (art. 902652)

---

### **NOZZLE FOR BUTYROMETERS IN STAINLESS STEEL**

- ☒ flat nozzle
- ☒ dimensions LxDxH: 2 x 3 x 120 mm
- ☒ suitable for butyrometers Gerber 4%

---

## **UB6** (art. 900232)

---

### **NOZZLE FOR BUTYROMETERS IN STAINLESS STEEL**

- ☒ flat nozzle
- ☒ dimensions LxDxH: 2 x 3 x 90 mm
- ☒ suitable for butyrometers Gerber 6%



---

## **UC6** (art. 900174)

---

### **CURVED NOZZLE IN STAINLESS STEEL**

- ☒ aims water jet on powder detergent dispenser



---

## **ULB40** (art. 900175)

---

### **NYLON PIPETTE ADAPTER NOZZLE**

- ☒ universal adapter for pipette washing



---

## **ULB6140** (art. 904982)

---

### **NOZZLE STAINLESS STEEL FOR WASHING BOTTLES**

- ☒ Nozzle for the washing of large bottles and big dimension glassware
- ☒ Nozzle with diameter: 6 mm - lenght: 140 mm
- ☒ M6 thread with perforated terminal for bottle washing
- ☒ Provived with a cross-support with protective material to locate and fix the glassware
- ☒ Made in stainless steel

