

Refrigerated | Low speed | Benchtop



Order No.:010010600

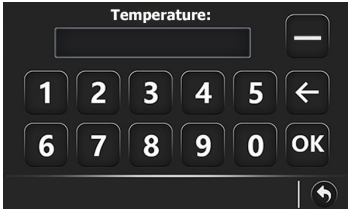
TDL-6



LCD touch screen

- >Simple and clear to show all parameters
- >Touch screen,easy to set parameters
- >RCF can be set directly
- >Intelligent status display,real-time and real values
- >User can set parameters even with gloves
- >User can reset parameters when rotor is spinning

PROGRAM	ROTOR	SPEED	TIME	TEMP	ACC/DEC
001	cx	12X1. 5mL 10000rpm 6987xg	00:05:00	4	02/02
002		24X2mL 1001rpm 104xg	00:05:00	4	02/02
003		12X1. 5mL 1001rpm 70xg	00:05:00	4	02/05
004		12X1. 5mL 1001rpm 70xg	00:05:00	4	02/03
005		12X1. 5mL 1001rpm 70xg	00:05:00	4	02/02



	1	2	3	4	5	6	7
Speed	12000	15000	11000	8000	9000	10000	15000
Time	00:01:00	00:01:00	00:01:00	00:01:00	00:01:00	00:01:00	00:01:00
Temp	4	4	4	4	4	4	4
Rotor	12X1. 5mL	Acc	02	Dec	04	Add	Del

Sys Prompt	ON	OFF	TEMP CTRL System	OFF	ECO	PERF
Key Prompt	ON	OFF	ScreenBlank Time	10s		
Password Lock	ON	OFF	Unbalanced Sensitivity	0		
Timekeeping	When reach speed	When start running	Screen Lock Time	0s		

FEATURES

User-friendly functions

- >up to 1000 user-defined programs
- >up to 100000 run histories
- >up to 40 rates acceleration and deceleration,speed downs curvelly slowly from 600rpm to 0rpm to prevent samples shake
- >up to 7 stages multi-stage centrifugation mode available
- >up to 99h59m59s timer range, 1s increment
- >Support short spin and continuous centrifugation
- >Reservation:can reserve cooling,turn on and turn off time
- >Curve display---Speed curve,RCF curve and Temperature curve are displayed together,clear to see their changing and relations.

Ensure safety

- >Imbalance detection by three axis gyroscope
- >Motorized electronic door lock
- >Door cannot be opened when rotor is spinning
- >Gas hinge to prevent door falling
- >Port in the door for calibration and operation checking
- >Emergency door lock release
- >Password to lock the device
- >User management with permission allocation
- >Various protections to ensure safe centrifugation
- >With never be lost electronic instruction manual

Refrigeration

- >High quality compressor unit
- >-20°C to +40°C ,1°C increment
- >±1°C high temperature accuracy
- >CFC-free refrigerant
- >PID dynamic temperature control
- >Temperature sensor inside the chamber
- >Starts refrigeration when power on
- >Maintains refrigeration after spin
- >With ECO energy-saving module

Good components

- >Motor: Variable frequency motor. stable running,maintenance free,long life
- >Housing: Thick and strong steel
- >Chamber: 316 stainless steel with teflon coating. anticorrosion and easy to clean
- >Rotor: Aluminum alloy fixed angle rotor; Steel/Stainless steel swing out rotor.
- >Rotors are autoclavable

TECHNICAL DATA

Model	TDL-6	Speed Accuracy	±10rpm
Max Speed	6000rpm	Time Setting	1s ~ 99h59m59s
Max RCF	5123xg	Noise	≤60dB(A)
Max Capacity	4x250ml	Power Consumption	1200w
Temperature Range	-20°C ~ +40°C	Dimension	580x640x390mm
Temperature Accuracy	±1°C	Weight	82kg

AVAILABLE ROTORS



Order No.:10000401000

Rotor:Swing out rotor
Capacity: 4×100ml
Max speed:5000rpm
Max RCF:4650×g
Tube size:Φ38×114mm



Order No.:10000400500

Rotor:Swing out rotor
Capacity: 4×50ml
Max speed:5000rpm
Max RCF:4650×g
Tube size:Φ30×116mm



Order No.:10003200150

Rotor:Swing out rotor
Capacity: 32×15ml
Max speed:4000rpm
Max RCF:2980×g
Tube size:Φ17×121mm



Order No.:10000800500

Rotor:Swing out rotor
Capacity:8×50ml
Max speed:4000rpm
Max RCF:2980×g
Tube size:Φ30×116mm



Order No.:10000801000

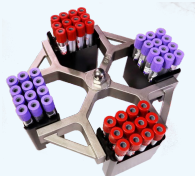
Rotor:Swing out rotor
Capacity:8×100ml
Max speed:4000rpm
Max RCF:2980×g
Tube size:Φ38×114mm



Order No.:10000402500

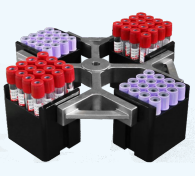
Rotor:Swing out rotor
Capacity:4×250ml
Max speed:4000rpm
Max RCF:2980×g
Tube size:Φ63×111mm

A d a p t e r	Capacity	Order No.
	8×50ml	10200800502
	4×100ml	10200401000
	36×10ml	10203600100
	40×7ml	10204000077
	20×15ml	10202000150



Order No.:10004800077

Rotor:Swing out rotor
Capacity:48×2~7ml blood tube
Max speed:4000rpm
Max RCF:2980×g
Tube size:Φ13×75~100mm



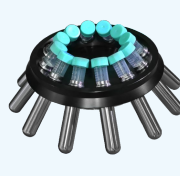
Order No.:10006400077

Rotor:Swing out rotor
Capacity:64×2~7ml blood tube
Max speed:4000rpm
Max RCF:2980×g
Tube size:Φ13×75~100mm



Order No.:10100600500

Rotor:Fixed angle rotor
Capacity: 6×50ml
Max speed:6000rpm
Max RCF:5123×g
Tube size:Φ29×116mm



Order No.:10101200150

Rotor:Fixed angle rotor
Capacity: 12×15ml
Max speed:6000rpm
Max RCF:5123×g
Tube size:Φ17×121mm



Order No.:10000600024

Rotor:Microplate rotor
Capacity:2×3×96 well plate
Max speed:4000rpm
Max RCF:1971×g
max: 128×87×60mm